

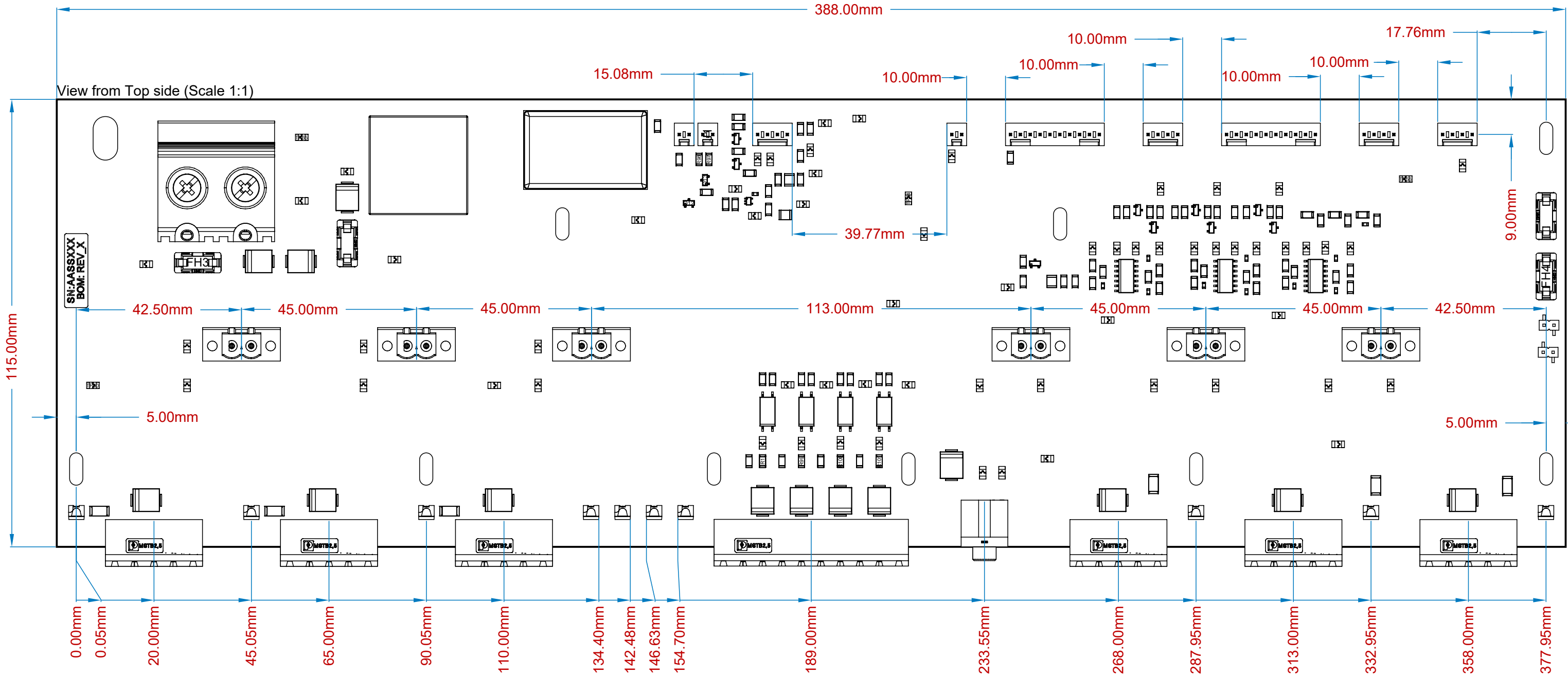
ACCEPTABILITY REQUIREMENTS

2. Minimum Acceptability
- Acceptability requirements are in accordance with specification IPC-A-610, Class 2 in latest version.

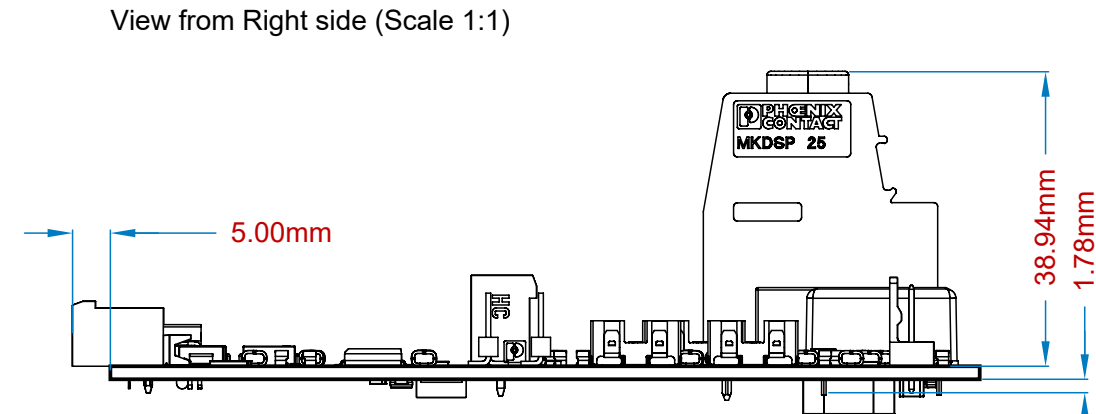
PROCESSES


3. Conformal Coating
- Conformal coating shall be conform with IPC-CC-830C (type AR). Apply to primary side and secondary side. HumiSeal® 1B73 recommended. Use appropriate conformal coating mask for each side of board.


REVISIONS				
ZONE	REV	DESCRIPTION	DATE	APPROVED
	A0	INITIAL RELEASE	06/23	JTU
	A1	Correction and improvement of the concept	01/24	JTU
	A2	Routing of the TOR led, J6 silkscreen, Power management	07/24	JTU



Board Outline Dimensioning Details

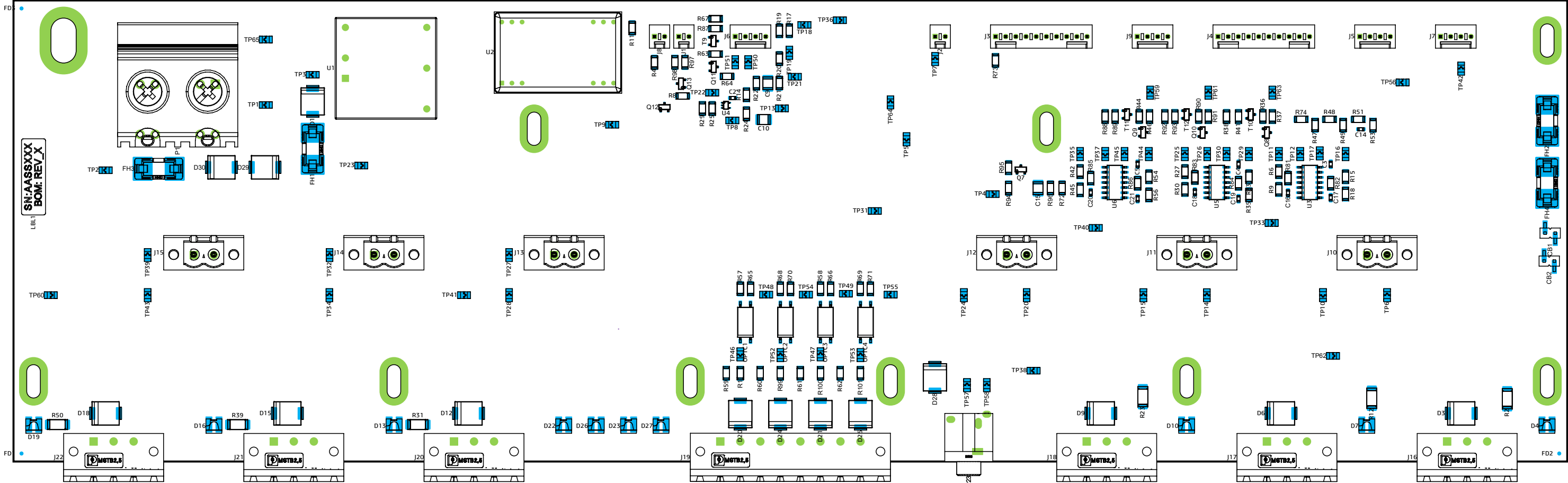



THE INFORMATION CONTAINED IN THIS DRAWING IS THE SOLE PROPERTY OF CEA. ANY REPRODUCTION IN PART OR AS A WHOLE WITHOUT THE WRITTEN PERMISSION OF CEA IS PROHIBITED.		UNLESS OTHERWISE SPECIFIED DIMENSIONS AND TOLERANCE ARE IN MM AND APPLY TO THE FINISHED PART		DRAWN J. TUPINIER	DATE 15/11/2024	 CEA/DAM/DIF/DASE/STMG/LCDS Bruyères le chatel 91297 ARPAJON	
				DESIGNER J. TUPINIER	DATE 15/11/2024		
TOLERANCE ON:				CHECKER PE. BUTHIER	DATE 15/11/2024	Assembly Drawing - Giroux_MotherBoard	
				QA	DATE		
NEXT ASSY		USED ON		PROV. ENG.	DATE	SIZE A3	CAGE CODE
APPLICATION						DWG NO.	REV. A2
						SCALE 1:1	SHEET 1 OF 8

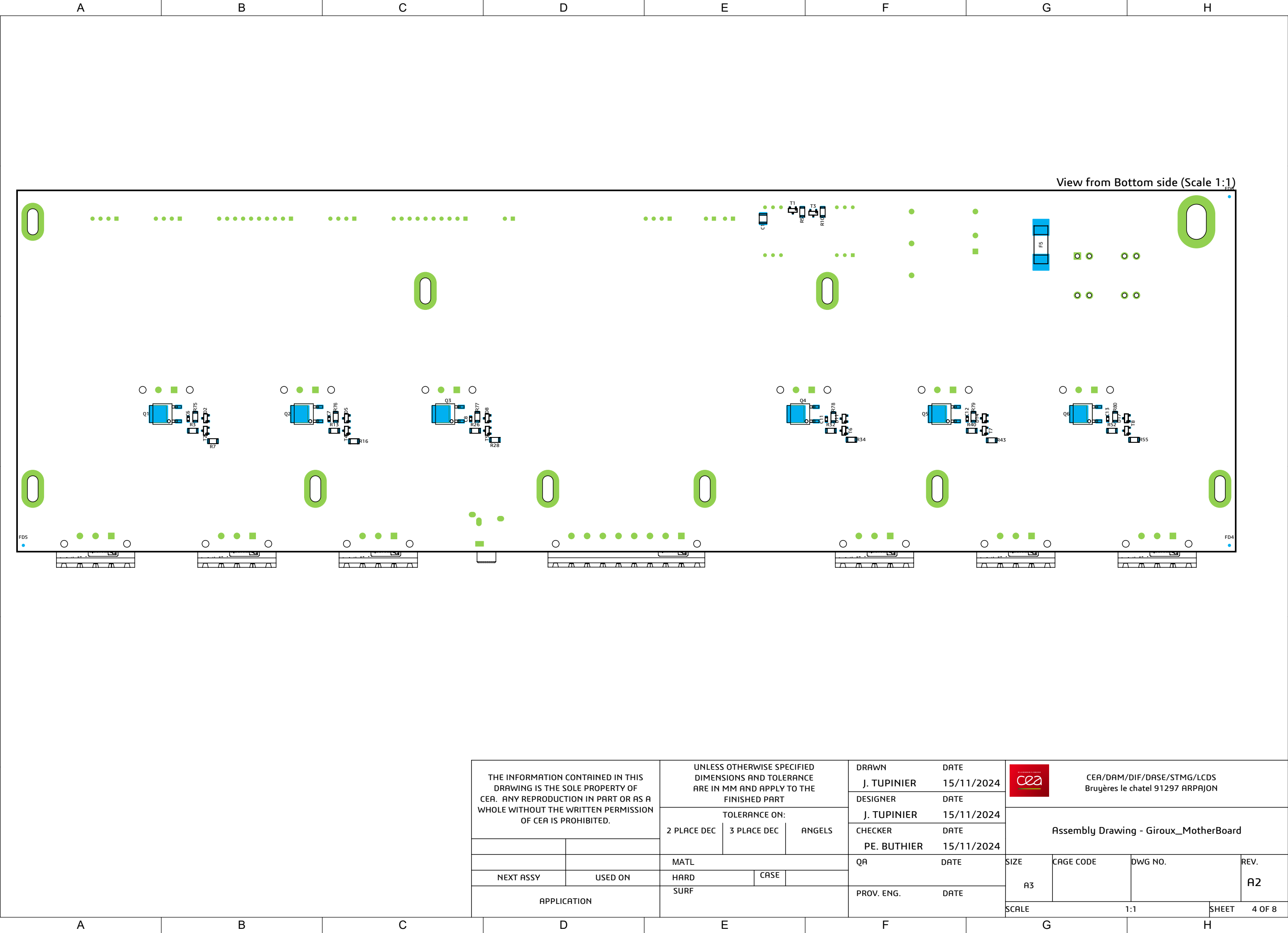
A					B					C					D					E					F					G					H														
Bill Of Materials																									Bill Of Materials																								
Line #		Designator								Value				Comment								Quantity			Line #		Designator								Value				Comment								Quantity		
1		C1, C9, C10								10 µF				10µF, 10%, 3225, 25V, X5R								3			27		R5, R21, R24, R37, R46, R57, R58, R64, R68, R69, R91								1K00				CRCW12061K00RFKEA								11		
2		C2, C3, C4, C5, C6, C7, C8, C11, C12, C13, C14, C16, C17, C18, C19, C20, C21								0.1 µF				0.1µF, 5%, 1608, 50V, X7R								17			28		R6, R9, R15, R18, R22, R27, R33, R36, R42, R44, R54, R63, R75, R76, R77, R78, R79, R80, R81, R82, R83, R84, R85, R86, R90, R94, R95, R96, R97, R98								100K				CRCW1206100KFKEA								30		
3		CB1, CB2								2 Position				TSM-102-01-L-SV								2			29		R8, R17, R19, R20, R48, R51								10K0				CRCW120610K0FKEA								6		
4		D1								100V/3A				VS-30BQ100-M3/9AT								1			30		R11, R38, R65, R66, R67, R70, R71, R87, R88, R92								1M00				CRCW12061M00FKEA								10		
5		D2, D5, D8, D11, D14, D17								15V				BZX84C15LT1G								6			31		R14								680K				CRCW1206680KFKEA								1		
6		D3, D6, D9, D12, D15, D18, D29, D30								33V				SM15T33A								8			32		R25								2K10				CRCW12062K10RFKEA								1		
7		D4, D7, D10, D13, D16, D19, D22, D23, D26, D27								570nm, 3.3V				KA-4040ZGS								10			33		R29								18K0				CRCW120618K0FKEA								1		
8		D20, D21, D24, D25, D28								6.8V				SM15T6V8A								5			34		R30, R35, R45, R56								27K0				CRCW120627K0FKEA								4		
9		F5								F50A				0456050.DRSDE								1			35		R47, R49, R53, R74								20K0				CRCW120620K0FKEA								4		
10		FH1, FH2, FH3, FH4								125V/5A				0031.7701.11								4			36		T2, T3, T4, T5, T6, T7, T8, T9, T10, T11, T12								45V/100mA				BC847B,215								11		
11		J1, J2, J8								2 position				22-29-2021								3			37		TP1, TP2, TP3, TP4, TP5, TP6, TP7, TP8, TP9, TP10, TP11, TP12, TP13, TP14, TP15, TP16, TP17, TP18, TP19, TP20, TP21, TP22, TP23, TP24, TP25, TP26, TP27, TP28, TP29, TP30, TP31, TP32, TP33, TP34, TP35, TP36, TP37, TP38, TP39, TP40, TP41, TP42, TP43, TP44, TP45, TP46, TP47, TP48, TP49, TP50, TP51, TP52, TP53, TP54, TP55, TP56, TP57, TP58, TP59, TP60, TP61, TP62, TP63, TP64, TP65								1 position				S1751-46R								65		
12		J3, J4								10 position				22-29-2101								2			38		U1								24V/20W				THN 20-2415WI								1		
13		J5, J6, J7, J9								4 position				22-29-2041								4			39		U2								5V/5W				TVN 5-2411WI								1		
14		J10, J11, J12, J13, J14, J15								2 Position				MSTBV 2,5 HC/ 2-GF								6			40		U3, U5, U6												HCF4013YM013TR								3		
15		J16, J17, J18, J20, J21, J22								3 Position				MSTB 2,5 HC/ 3-GF								6			41		U4												MIC842HYC5-TR								1		
16		J19								8 Position				MSTB 2,5 HC/ 8-GF								1																											
17		LBL1												Label								1																											
18		OPTC1, OPTC2, OPTC3, OPTC4								80%				TCLT1007								4																											
19		P1								2 Position				1932588								1																											
20		P23								4 Position				KLBR4								1																											
21		Q1, Q2, Q3, Q4, Q5, Q6								40V				SUD50P04-09L								6																											
22		Q7, Q8, Q9, Q10, Q11, Q12, Q13, T1								45V/100mA				BC857A,215								8																											
23		R1, R59, R60, R61, R62, R99, R100, R101								47R0				CRCW120647R0FKEA								8																											
24		R2, R12, R23, R31, R39, R50								3K00				CRCW20103K00JNEF								6																											
25		R3, R7, R10, R13, R16, R26, R28, R32, R34, R40, R43, R52, R55								15K0				CRCW120615K0FKEA								13																											
26		R4								3K00				CRCW12063K00FKEA								1																											
27		R5, R21, R24, R37, R46, R57, R58, R64, R68, R69, R91								1K00				CRCW12061K00RFKEA								11																											
28		R6, R9, R15, R18, R22, R27, R33, R36, R42, R44, R54, R63, R75, R76, R77, R78, R79, R80, R81, R82, R83, R84, R85, R86, R90, R94, R95, R96, R97, R98								100K				CRCW1206100KFKEA								30																											
Bill of materials (board)															THE INFORMATION CONTAINED IN THIS DRAWING IS THE SOLE PROPERTY OF CEA. ANY REPRODUCTION IN PART OR AS A WHOLE WITHOUT THE WRITTEN PERMISSION OF CEA IS PROHIBITED.					UNLESS OTHERWISE SPECIFIED DIMENSIONS AND TOLERANCE ARE IN MM AND APPLY TO THE FINISHED PART					DRAWN J. TUPINIER			DATE 15/11/2024			 CEA/DAM/DIF/DASE/STMG/LCDS Brugères le chatel 91297 ARPAJON																		
															TOLERANCE ON:			DESIGNER J. TUPINIER			DATE 15/11/2024			Assembly Drawing - Giroux_MotherBoard																									
															2 PLACE DEC			3 PLACE DEC			ANGELS								CHECKER PE. BUTHIER			DATE 15/11/2024																	
															MATL					QA									DATE					SIZE A3		CAGE CODE			DWG NO.			REV. A2							
															NEXT ASSY					USED ON									HARD			CASE			PROV. ENG.					DATE									
															APPLICATION										SURF					PROV. ENG.					DATE			SCALE 1:1					SHEET 2 OF 8						
A					B					C					D					E					F					G					H														

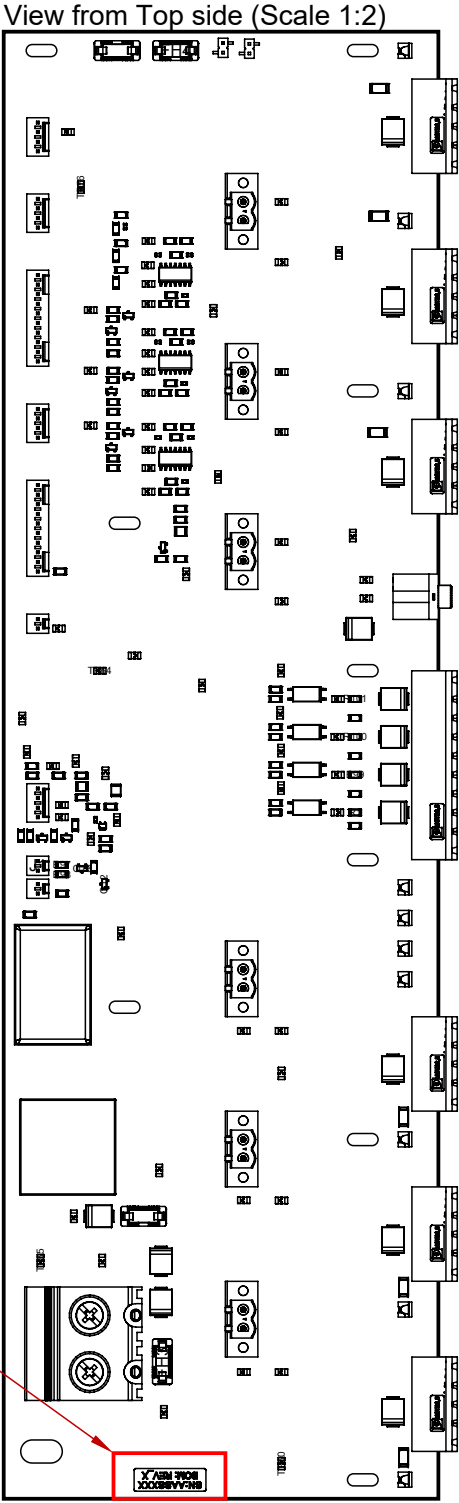
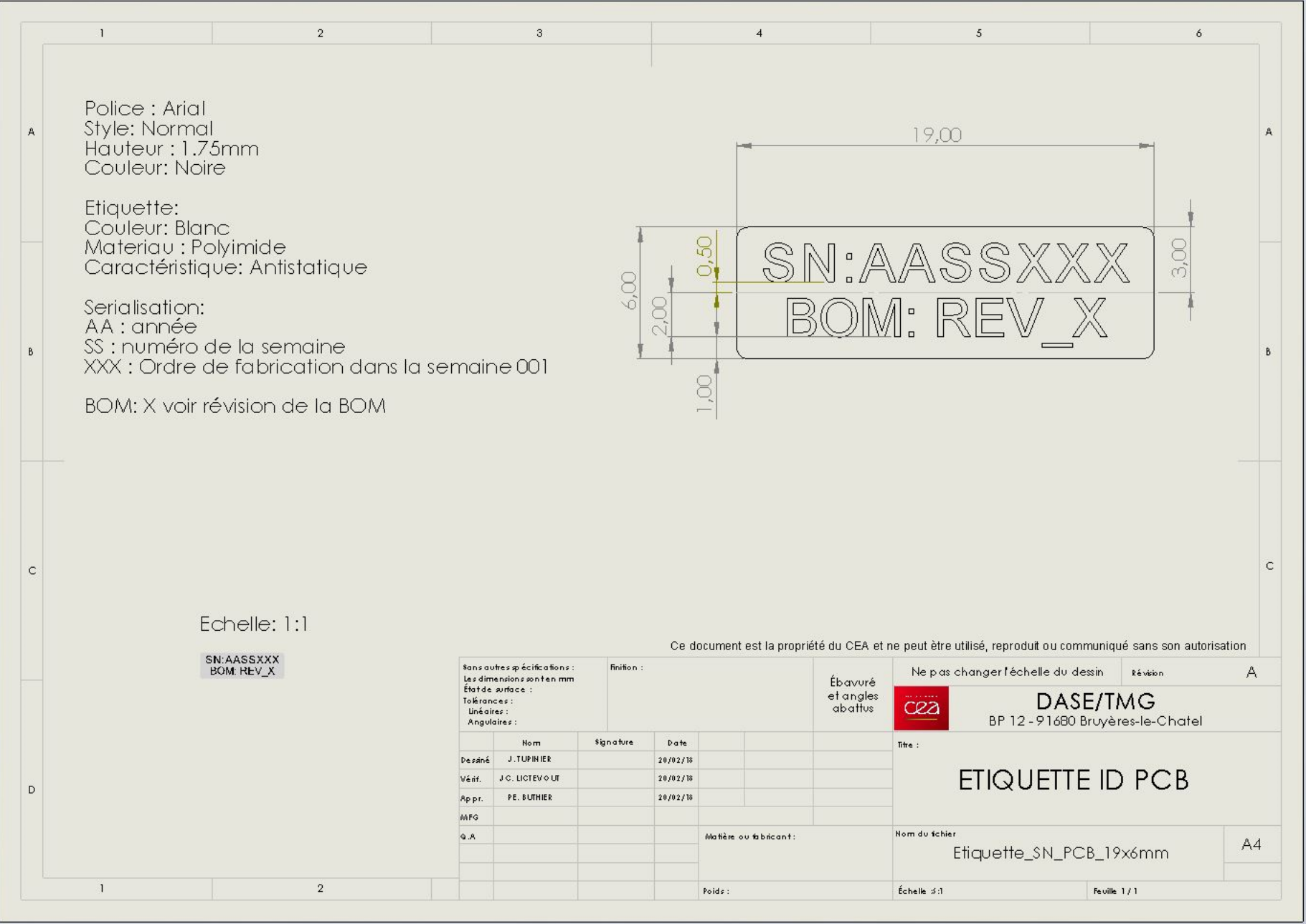
Board Assembly

View from Top side (Scale 1:1)



THE INFORMATION CONTAINED IN THIS DRAWING IS THE SOLE PROPERTY OF CEA. ANY REPRODUCTION IN PART OR AS A WHOLE WITHOUT THE WRITTEN PERMISSION OF CEA IS PROHIBITED.		UNLESS OTHERWISE SPECIFIED DIMENSIONS AND TOLERANCE ARE IN MM AND APPLY TO THE FINISHED PART			DRAWN	DATE	<div></div> <div>CEA/DAM/DIF/DASE/STMG/LCDS Bruyères le chatel 91297 ARPAJON</div>				
					DESIGNER	DATE					
		TOLERANCE ON:			J. TUPINIER	15/11/2024	Assembly Drawing - Giroux_MotherBoard				
		2 PLACE DEC	3 PLACE DEC	ANGELS	CHECKER	DATE					
					PE. BUTHIER	15/11/2024					
		MATL			QA		DATE	SIZE	CAGE CODE	DWG NO.	REV.
NEXT ASSY	USED ON	HARD		CASE				A3			A2
APPLICATION		SURF			PROV. ENG.		DATE		SCALE		
									1:1		SHEET

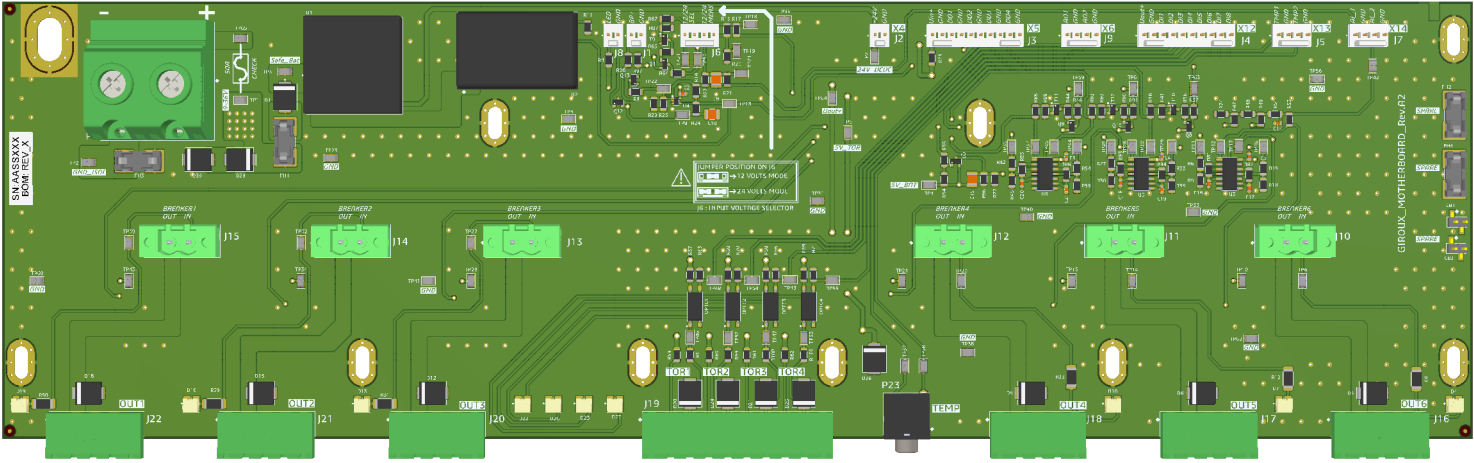




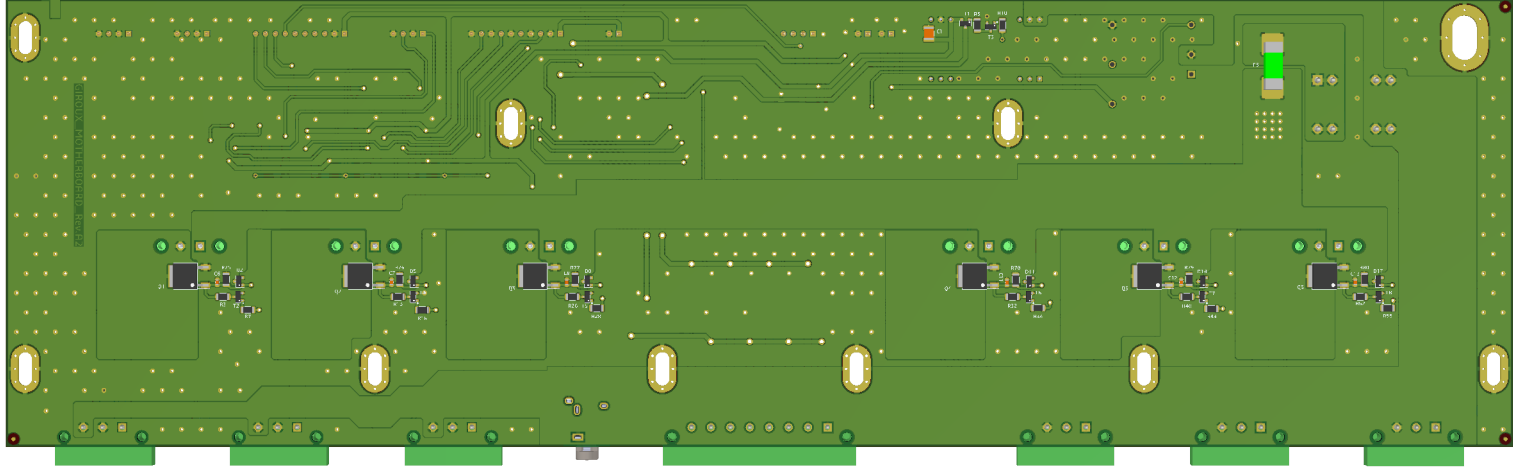
Label

THE INFORMATION CONTAINED IN THIS DRAWING IS THE SOLE PROPERTY OF CEA. ANY REPRODUCTION IN PART OR AS A WHOLE WITHOUT THE WRITTEN PERMISSION OF CEA IS PROHIBITED.		UNLESS OTHERWISE SPECIFIED DIMENSIONS AND TOLERANCE ARE IN MM AND APPLY TO THE FINISHED PART			DRAWN J. TUPINIER	DATE 15/11/2024	<div>ceea</div> CEA/DAM/DIF/DASE/STMG/LCDS Bruyères le chatel 91297 ARPAGON			
					DESIGNER J. TUPINIER	DATE 15/11/2024				
		TOLERANCE ON:			CHECKER PE. BUTHIER	DATE 15/11/2024	Assembly Drawing - Giroux_MotherBoard			
		2 PLACE DEC	3 PLACE DEC	ANGELS	QA	DATE				
		MATL			PROV. ENG.		DATE	SIZE A3	CAGE CODE	DWG NO.
NEXT ASSY	USED ON	HARD		CASE				1:1		REV. A2
APPLICATION		SURF						SHEET	5 OF 8	

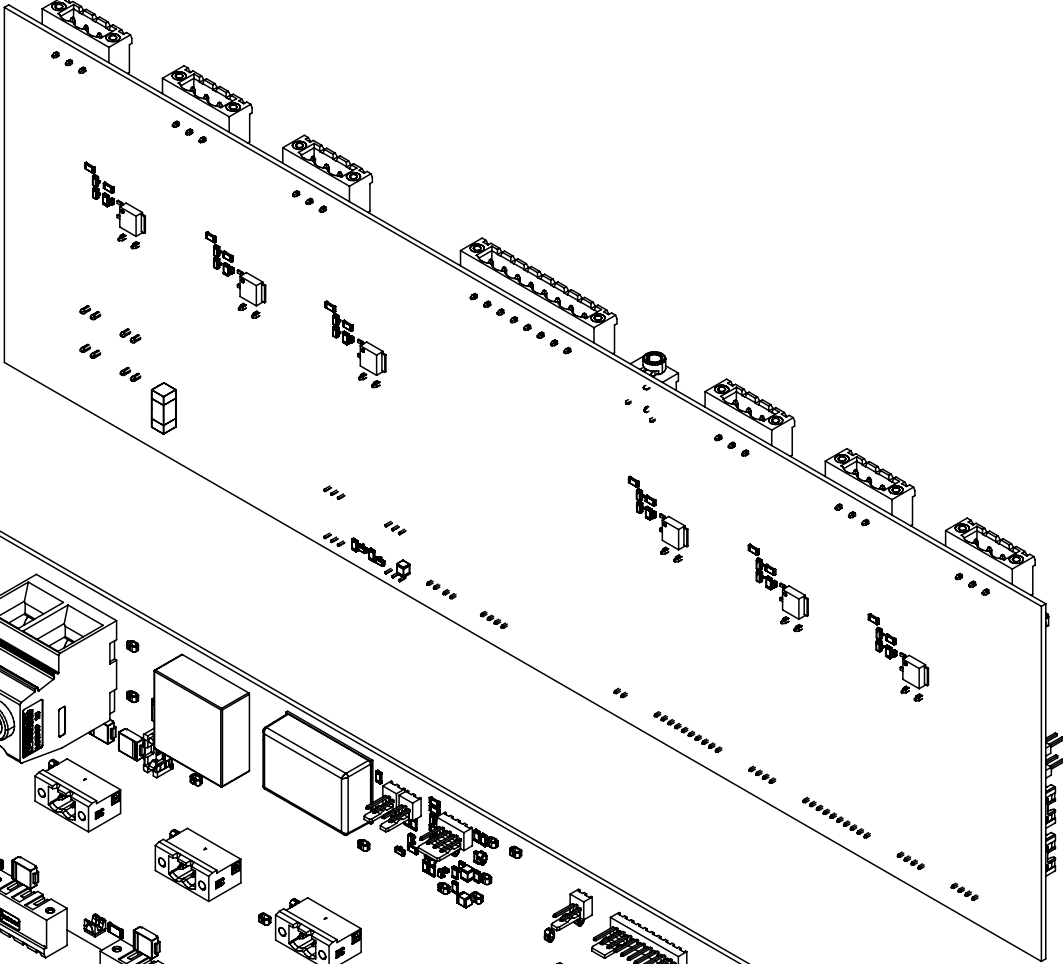
Realistic View



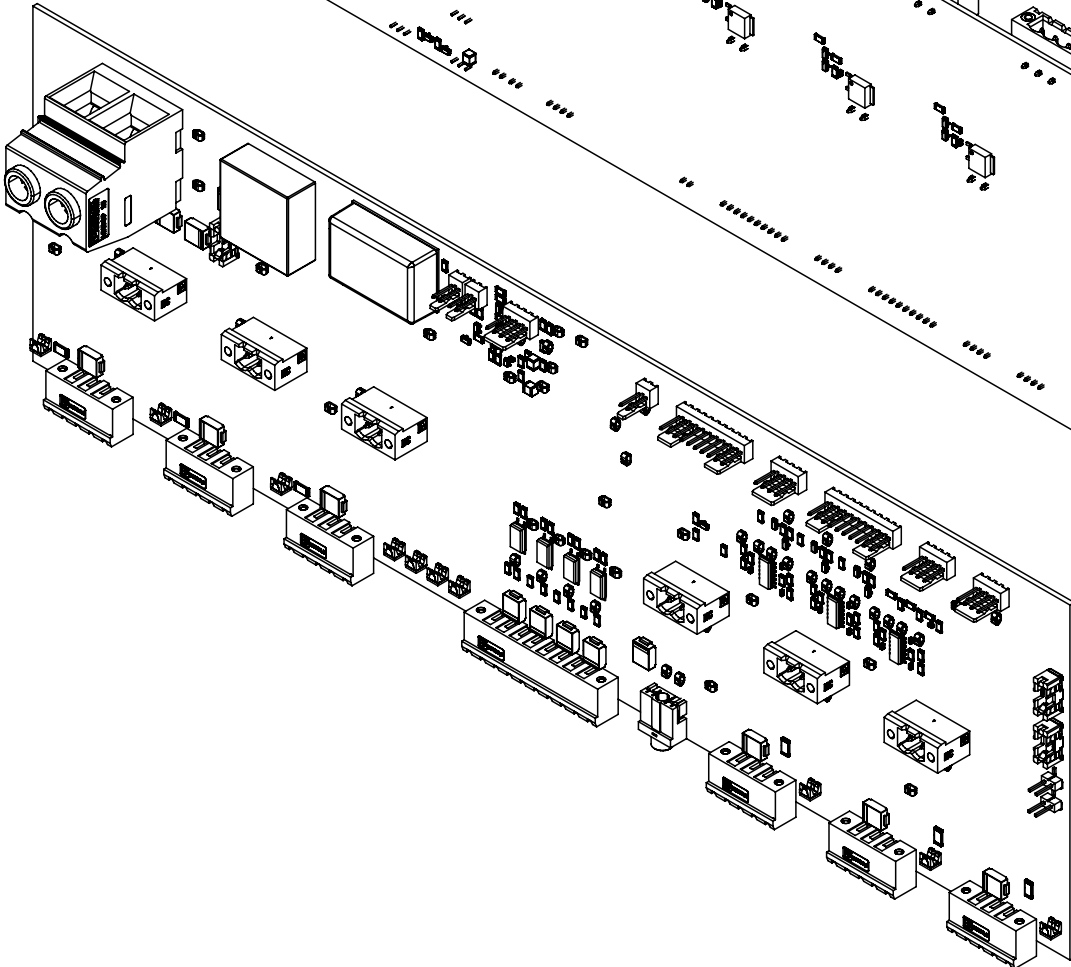
Realistic View




View from Bottom side (Scale 1:2)

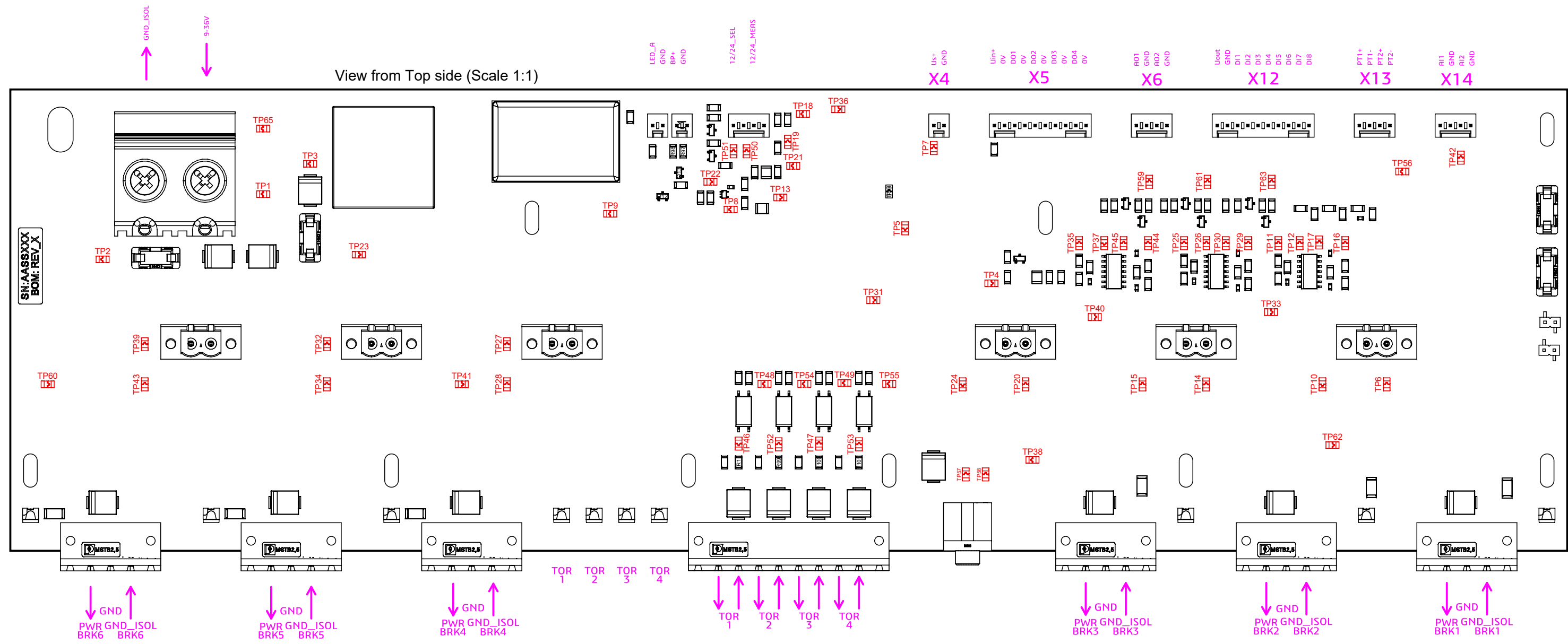



View from Top side (Scale 1:2)



THE INFORMATION CONTAINED IN THIS DRAWING IS THE SOLE PROPERTY OF CEA. ANY REPRODUCTION IN PART OR AS A WHOLE WITHOUT THE WRITTEN PERMISSION OF CEA IS PROHIBITED.		UNLESS OTHERWISE SPECIFIED DIMENSIONS AND TOLERANCE ARE IN MM AND APPLY TO THE FINISHED PART			DRAWN J. TUPINIER		DATE 15/11/2024			CEA/DAM/DIF/DASE/STMG/LCDS Bruyères le chatel 91297 ARPAJON				
					DESIGNER J. TUPINIER		DATE 15/11/2024							
		TOLERANCE ON:			CHECKER PE. BUTHIER		DATE 15/11/2024		Assembly Drawing - Giroux_MotherBoard					
		2 PLACE DEC	3 PLACE DEC	ANGELS										
		MATL			QA		DATE		SIZE	CAGE CODE	DWG NO.	REV.		
NEXT ASSY	USED ON	HARD		CASE				A3				A2		
APPLICATION		SURF			PROV. ENG.		DATE		SCALE		1:1		SHEET	6 OF 8

Test point and Wiring



THE INFORMATION CONTAINED IN THIS DRAWING IS THE SOLE PROPERTY OF CEA. ANY REPRODUCTION IN PART OR AS A WHOLE WITHOUT THE WRITTEN PERMISSION OF CEA IS PROHIBITED.		UNLESS OTHERWISE SPECIFIED DIMENSIONS AND TOLERANCE ARE IN MM AND APPLY TO THE FINISHED PART			DRAWN	DATE	<div></div> CEA/DAM/DIF/DASE/STMG/LCDS Bruyères le chatel 91297 ARPAJON			
					J. TUPINIER	15/11/2024				
		TOLERANCE ON: <div>2 PLACE DEC3 PLACE DECANGELS</div>			DESIGNER	DATE	Assembly Drawing - Giroux_MotherBoard			
					J. TUPINIER	15/11/2024				
					CHECKER	DATE				
					PE. BUTHIER	15/11/2024				
		MATL			QA	DATE	SIZE	CAGE CODE	DWG NO.	REV.
NEXT ASSY	USED ON	HARD		CASE			A3			A2
APPLICATION		SURF			PROV. ENG.	DATE				
					SCALE1:1SHEET7 OF 8					

